

100 bpm

Sila Trio
For Three Guitars

(c) Toby Darling 2015

1

Bb Dm Gm F

5

Eb F Gm F

9

Bb Dm Gm F

13

Eb F Gm F

17

Dm F Gm Bb

21

Dm Bb F Gm

25

F Eb Bb F

29

Gm Cm Bb F

33

C Ab Bb Eb Bb

37

Ab Bb Cm Gm Ab

41

Chords: Eb, Bb, C, Ab, Bb

This system contains measures 41 through 45. It features three staves: a vocal line in the top staff, a piano accompaniment in the middle staff, and a bass line in the bottom staff. The key signature has two flats (Bb and Eb). The time signature is 3/4. The chords Eb, Bb, C, Ab, and Bb are indicated below the piano accompaniment staff.

45

Chords: Dm, Dm, Dm, Dm

This system contains measures 46 through 48. It features three staves: a vocal line in the top staff, a piano accompaniment in the middle staff, and a bass line in the bottom staff. The key signature has two flats. The chords Dm, Dm, Dm, and Dm are indicated below the piano accompaniment staff.

49

Chords: Dm, F, Am, Dm, Dm, A

This system contains measures 49 through 52. It features three staves: a vocal line in the top staff, a piano accompaniment in the middle staff, and a bass line in the bottom staff. The key signature has two flats. The chords Dm, F, Am, Dm, Dm, and A are indicated below the piano accompaniment staff.

53

Chords: Dm, Dm, F, A

This system contains measures 53 through 56. It features three staves: a vocal line in the top staff, a piano accompaniment in the middle staff, and a bass line in the bottom staff. The key signature has two flats. The chords Dm, Dm, F, and A are indicated below the piano accompaniment staff.

57

Chords: Dm, Dm, Dm, A, Dm

This system contains measures 57 through 60. It features three staves: a vocal line in the top staff, a piano accompaniment in the middle staff, and a bass line in the bottom staff. The key signature has two flats. The chords Dm, Dm, Dm, A, and Dm are indicated below the piano accompaniment staff.

61

Bb Dm Gm F

65

Eb F Gm F

69

Dm F Gm Bb

73

Dm Bb F Gm

77

F Eb Bb F

The image shows a musical score for guitar, consisting of two systems of three staves each. The first system covers measures 81 to 84, and the second system covers measures 85 to 87. The key signature is one flat (Bb), and the time signature is 4/4. The notation includes a treble clef, a bass clef, and a guitar clef. The guitar part is written in a three-part style, with the top staff for the treble clef, the middle staff for the bass clef, and the bottom staff for the guitar clef. Chord symbols are provided below the guitar staff: Gm, Cm, Bb, and F in the first system; Gm, Eb, F, and Bb in the second system. The melody is written in the treble clef, and the bass line is written in the bass clef. The guitar part consists of chords and single notes, with some flexibility in fingering noted in the text below.

Note: there is some flexibility how the guitar 3 part is played. Notes may be changed for easier guitar fingering as long as the chord and rhythm are correct.,

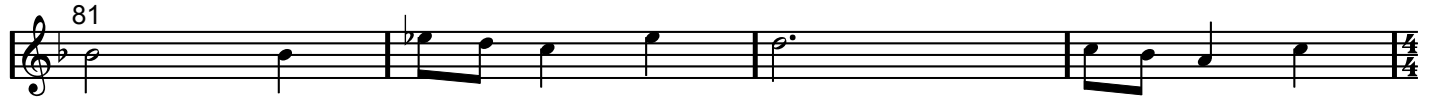
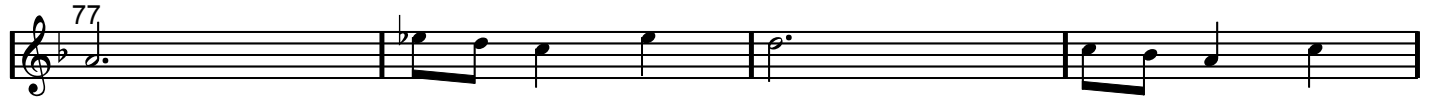
Guitar 1

Sila Trio
For Three Guitars

(c) Toby Darling 2015

1
5
9
13
17
21
25
29
33
37
41
45
49
53
57
61

Guitar 1 contd



Guitar 2

Sila Trio
For Three Guitars

(c) Toby Darling 2015

Musical score for Guitar 2, measures 9-72. The score is written in treble clef with a key signature of one flat (B-flat). The time signature is 3/4. The piece consists of 72 measures, divided into 12 systems of 6 measures each. Measure numbers 9, 13, 17, 21, 25, 29, 33, 37, 41, 45, 49, 53, 57, 61, 65, and 69 are indicated at the start of their respective lines. The notation includes various rhythmic values such as quarter, eighth, and sixteenth notes, as well as rests and slurs. The piece concludes with a final double bar line and a 3/4 time signature.

Guitar 2 contd



Guitar 3

Sila Trio
For Three Guitars

(c) Toby Darling 2015

1
5
9
13
17
21
25
29
33
37
41
45
49
53
57
61

Guitar 3 contd

Musical score for Guitar 3, measures 65-85. The score is written in treble clef with a key signature of one flat (B-flat) and a 4/4 time signature. The music consists of six staves of music. Measures 65-81 are in 4/4 time, and measure 85 is in 4/4 time. The notation includes chords, single notes, and rests. The final measure (85) ends with a double bar line and repeat dots.

65

69

73

77

81

85